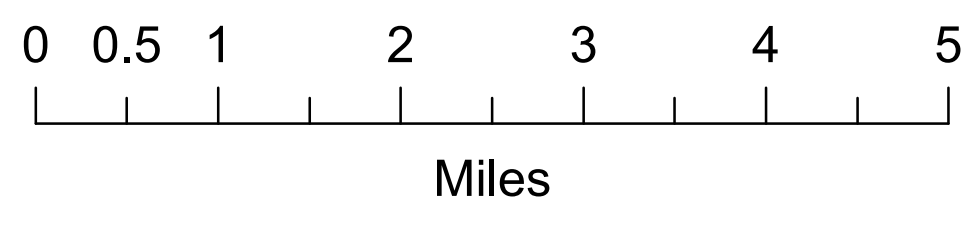
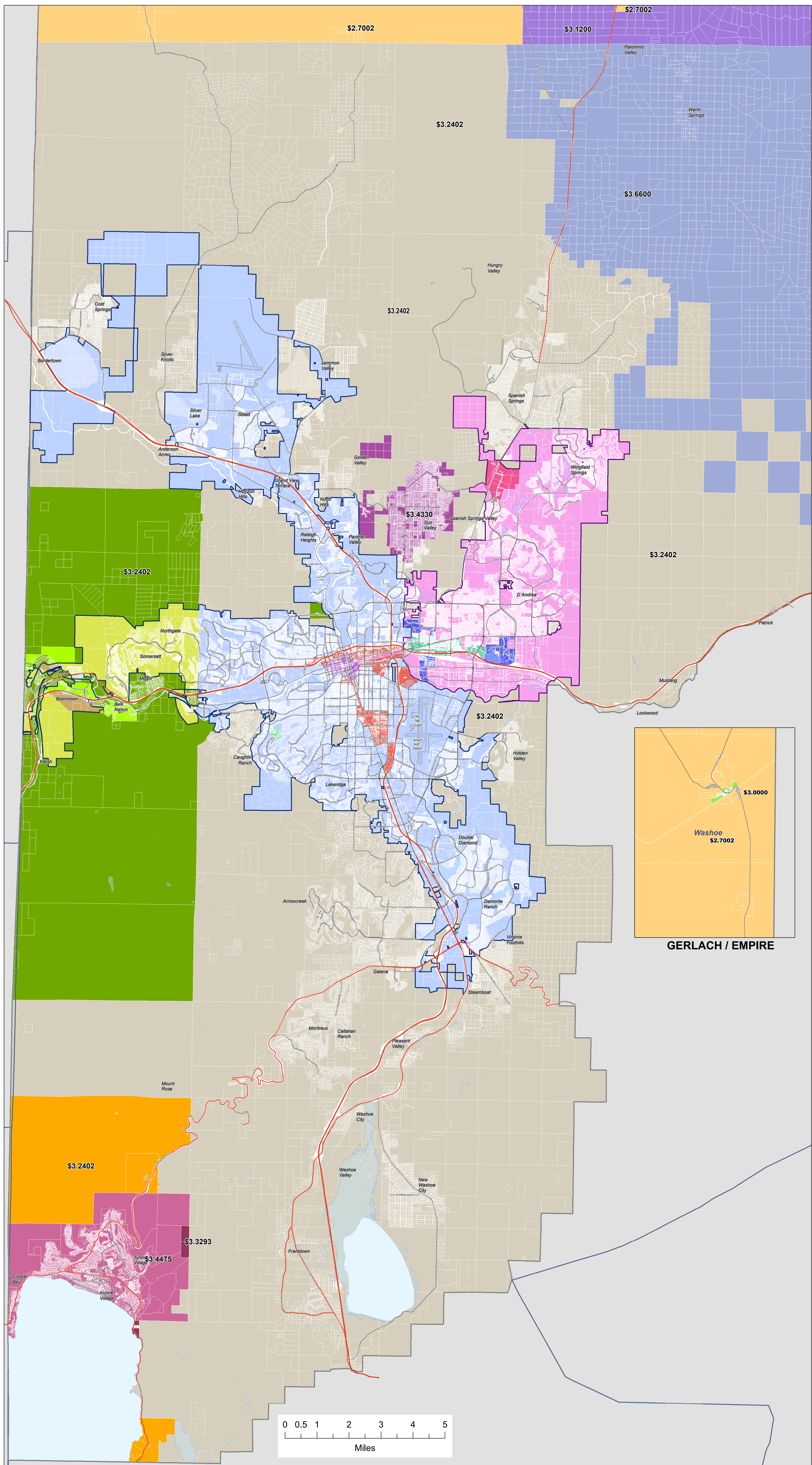


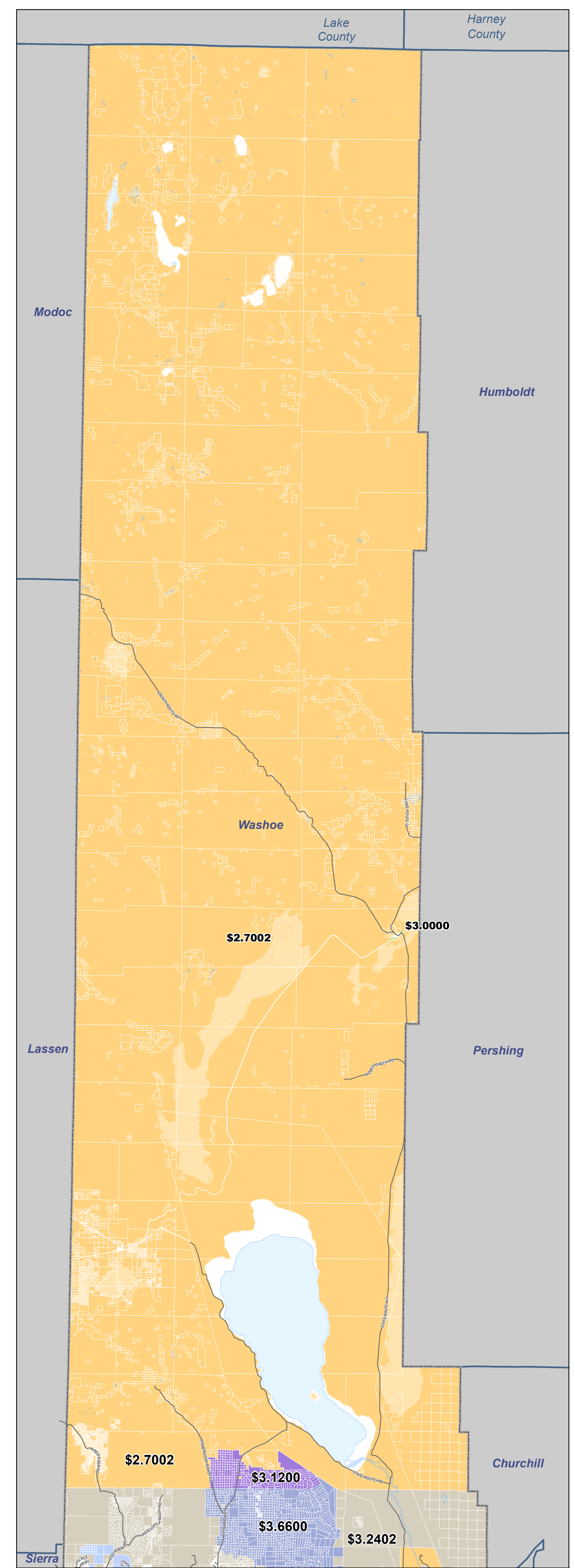
**WASHOE COUNTY, NEVADA**  
**DIRECT AND OVERLAPPING PROPERTY TAX RATES LAST TEN FISCAL YEARS**  
**(TAX RATES PER \$100 ASSESSED VALUATION)**

<b>Agency</b>	<b>Fiscal Year Ended June 30</b>									
	<b><u>2008</u></b>	<b><u>2009</u></b>	<b><u>2010</u></b>	<b><u>2011</u></b>	<b><u>2012</u></b>	<b><u>2013</u></b>	<b><u>2014</u></b>	<b><u>2015</u></b>	<b><u>2016</u></b>	<b><u>2017</u></b>
Washoe County	1.3917	1.3917	1.3917	1.3917	1.3917	1.3917	1.3917	1.3917	1.3917	1.3917
State of Nevada	0.1700	0.1700	0.1700	0.1700	0.1700	0.1700	0.1700	0.1700	0.1700	0.1700
Washoe County School District	1.1385	1.1385	1.1385	1.1385	1.1385	1.1385	1.1385	1.1385	1.1385	1.1385
Subtotal	2.7002	2.7002	2.7002	2.7002	2.7002	2.7002	2.7002	2.7002	2.7002	2.7002
Cities										
Reno	0.9456	0.9456	0.9456	0.9456	0.9456	0.9598	0.9598	0.9598	0.9598	0.9598
Sparks	0.9161	0.9161	0.9161	0.9161	0.9161	0.9161	0.9161	0.9598	0.9598	0.9598
Overlapping Tax Rate - Reno	3.6458	3.6458	3.6458	3.6458	3.6458	3.6600	3.6600	3.6600	3.6600	3.6600
Overlapping Tax Rate - Sparks	3.6163	3.6163	3.6163	3.6163	3.6163	3.6163	3.6163	3.6600	3.6600	3.6600

Source: 6/30/17 Washoe County CAFR, Schedule 2.2



# TAX DISTRICTS



## TAX DISTRICT - TAX RATE

- 1000 - \$3.6600
- 1001 - \$3.6600
- 1002 - \$3.6600
- 1011 - \$3.6600
- 1030 - \$3.6600
- 1800 - \$3.6600
- 1811 - \$3.6600
- 1831 - \$3.6600
- 2000 - \$3.6600
- 2001 - \$3.6600
- 2002 - \$3.6600
- 2020 - \$3.6600
- 4000 - \$3.2402
- 4011 - \$3.2402
- 4020 - \$3.4330
- 4030 - \$3.2404
- 4400 - \$3.6600
- 4500 - \$3.2402
- 4811 - \$3.2402
- 5000 - \$3.3293
- 5200 - \$3.4475
- 9000 - \$2.7002
- 9400 - \$3.1200
- 9601 - \$3.0000
- Sparks City Limit
- Reno City Limit
- Washoe County Boundary

## WATER BODIES

- Lake
- Playa

**TechnologyServices Department**  
**WASHOE COUNTY NEVADA**  
 Post Office Box 11130  
 Reno, Nevada 89520 (775) 328-2345